

alphaslice XL



 denrooms dimensions: d 7.15m x w 3.5m





Wiring and outlets for wall mounted TV



Microwave and Fridge with small freezer compartment. Integrated storage above optional



full height wardrobe space



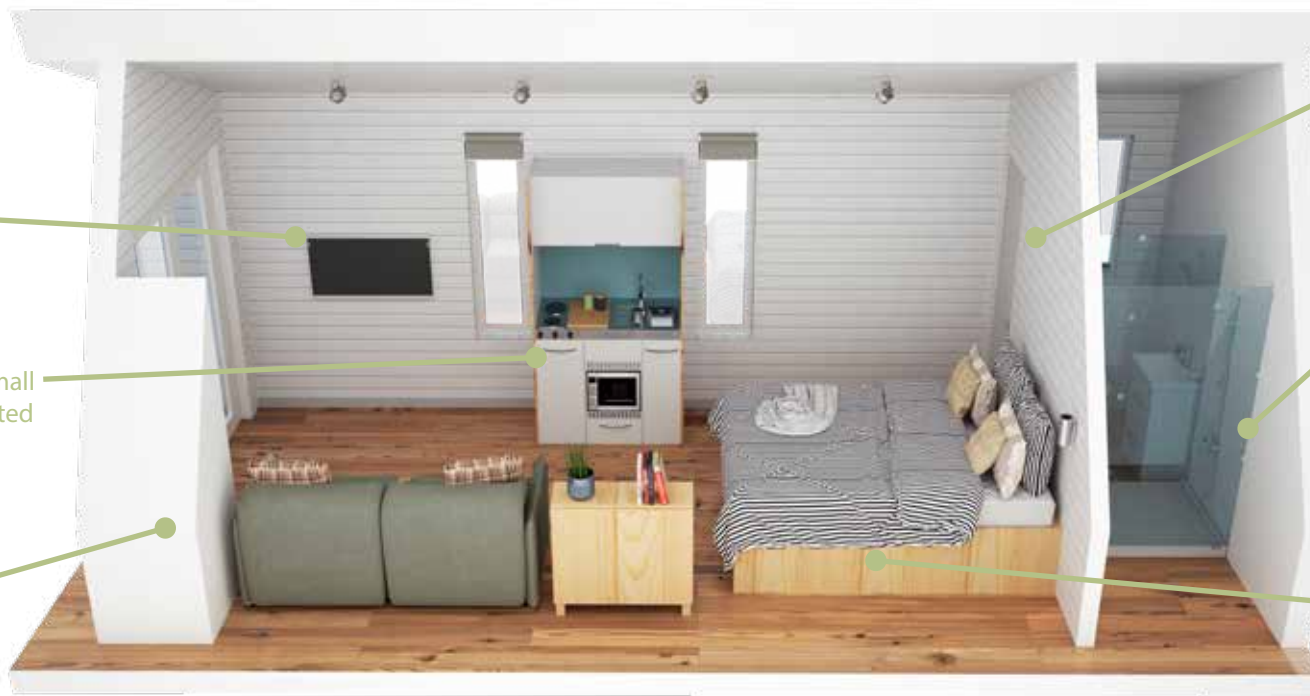
Painted tongue and groove wooden interior throughout main living space. (Colour options available)



Self-contained wash room with large shower enclosure (with tray), toilet, sink



full size bed (1500mm wide shown)



## interior space



the alphaslice xl is inspired by classic 'a-frame' design, but with an asymmetric contemporary twist (its side chopped off). This pod evokes the spirit of adventure and reconnecting with surroundings, whilst retaining a stunningly contemporary feel, both on the inside and out. The XL is perfect for those who want the entrance leading out to the front.





### movable & transportable

once manufactured, the alphaslice XL is delivered complete and ready to use. Its mounted on a detachable wheeled base, and then positioned ready for use with a foundation method specific to the site



### genuinely low maintenance

Our pods are framed in CNC machined structural grade timber and enclosed with a range of attractive decorative low-maintenance panelling, for decades of weather resistance and good looks.



### ultra insulation

denrooms use two insulation systems which combine to significantly exceed current UK building regulations, providing class leading thermal insulation performance.



### excellent detailing

UK Made, architecturally inspired, factory-built 'pods'. we pride ourselves in design, from using sustainably sourced Western Red Cedar cladding offering outstanding durability to including in every pod opening roof windows that flood the space with ambient light.



### built as a house

denrooms use innovative sustainable construction methods, so that our pods are built to be as strong and durable as that of a house builder.





## specification alphaslice XL

- Structural timber (OSB3) super-structure, CNC machined to exacting tolerances.

### exterior finish

- Exterior roof panels made from heavy duty PVC/Plastisol coated pre-galvanised steel sheets, which come with 25 years coating guarantee until first maintenance
- Premium grade Western Red Cedar cladding with powder coated aluminium trims and flashings. Stainless steel fixings for longevity.

### interior finish

- Painted tongue and groove wooden interior throughout main living space. UPVC commercial grade decorative wall treatment to bathroom
- Durable commercial grade vinyl 'click' flooring in classic oak (other colour choices available)

### interior

- Self-contained wash room with large shower enclosure (with tray), toilet, sink and electric only pressurised hot water system (Megaflo 90D direct unvented cylinder, or equivalent, serving kitchenette as well).
- Compact 'Elfin' kitchenette with mini fridge, combo oven/microwave, twin electrical hotplates, and storage or\* bar area with wine fridge (cooking implements and utensils excluded)
- NICEIC Electrical installation– 6 double sockets (with USB), shaver-point in bathroom, LED lighting throughout, including external lights. NICEIC certified electrical installation (excludes connection to your electrical provision), distribution box and min 32amp hook up point

### windows and doors

- Grey high security and low-maintenance 5-lever PVCu doors complete with 10 year guarantee. 2 xRooflights with opening panels and trickle push vents to provide background ventilation & x3 windows to side wall.

*Pods all 'plug and play' ready to connect to services, connection excluded (to be performed by customer contractors).*

t: 0330 555 2333  
w: [www.denrooms.co.uk](http://www.denrooms.co.uk)  
e: [sales@denrooms.co.uk](mailto:sales@denrooms.co.uk)

## dimensions

(external) d 7.15m x w 3.5m

(internal) d 6.5m x w 3m

## options

- for information on the different options you can make such as external cladding treatments / window positions /porch depth etc please contact us at [sales@denrooms.co.uk](mailto:sales@denrooms.co.uk)



see the full denrooms range at [denrooms.co.uk](http://denrooms.co.uk)

## about the environment

Providing environmentally conscious solutions is in our DNA. So much so that the European Regional Development Fund (ERDF) granted denrooms financial assistance to bring these environmental benefits to market. For full details, please visit: [www.denrooms.co.uk/environmental-policy](http://www.denrooms.co.uk/environmental-policy)

Company Reg No. 8896708 | VAT No. GB 179973729



alphaslice MAX



 denrooms dimensions: w 7.15m x d 3.5m





## interior space



the alphaslice max is inspired by classic 'a-frame' design, but with an asymmetric contemporary twist (its side chopped off). This pod evokes the spirit of adventure and reconnecting with surroundings, whilst retaining a stunningly contemporary feel, both on the inside and out. This design is perfect for those who prefer the entrance to the long side of the pod, with bi-fold doors opening up to the surroundings.





### movable & transportable

once manufactured, the alphaslice max is delivered complete and ready to use. Its mounted on a detachable wheeled base, and then positioned ready for use with a foundation method specific to the site



### genuinely low maintenance

Our pods are framed in CNC machined structural grade timber and enclosed with a range of attractive decorative low-maintenance panelling, for decades of weather resistance and good looks.



### ultra insulation

denrooms use two insulation systems which combine to significantly exceed current UK building regulations, providing class leading thermal insulation performance.



### excellent detailing

UK Made, architecturally inspired, factory-built 'pods'. we pride ourselves in design, from using sustainably sourced Western Red Cedar cladding offering outstanding durability to including in every pod opening roof windows that flood the space with ambient light.



### built as a house

denrooms use innovative sustainable construction methods, so that our pods are built to be as strong and durable as that of a house builder.



front elevation

side elevation



rear elevation

side elevation



## specification alphasllice MAX

- Structural timber (OSB3) super-structure, CNC machined to exacting tolerances.

### exterior finish

- Exterior roof panels made from heavy duty PVC/Plastisol coated pre-galvanised steel sheets, which come with 25 years coating guarantee until first maintenance
- Premium grade Western Red Cedar cladding with powder coated aluminium trims and flashings. Stainless steel fixings for longevity.

### interior finish

- Painted tongue and groove wooden interior throughout main living space. UPVC commercial grade decorative wall treatment to bathroom
- Durable commercial grade vinyl 'click' flooring in classic oak (other colour choices available)

### interior

- Self-contained wash room with large shower enclosure (with tray), toilet, sink and electric only pressurised hot water system (Megaflo 90D direct unvented cylinder, or equivalent, serving kitchenette as well).
- Compact 'Elfin' kitchenette with mini fridge, combo oven/microwave, twin electrical hotplates, and storage or\* bar area with wine fridge (cooking implements and utensils excluded)
- NICEIC Electrical installation– 6 double sockets (with USB), shaver-point in bathroom, LED lighting throughout, including external lights. NICEIC certified electrical installation (excludes connection to your electrical provision), distribution box and min 32amp hook up point

### windows and doors

- Grey high security and low-maintenance 5-lever PVCu bi-fold doors complete with 10 year guarantee. 3 xRooflights with opening panels and trickle push vents to provide background ventilation.

*Pods all 'plug and play' ready to connect to services, connection excluded (to be performed by customer contractors).*

t: 0330 555 2333

w: [www.denrooms.co.uk](http://www.denrooms.co.uk)

e: [sales@denrooms.co.uk](mailto:sales@denrooms.co.uk)

## dimensions

(external) w 7.15m x d 3.5m

(internal) w 6.75m x d 3m

## options

- for information on the different options you can make such as external cladding treatments / window positions /porch depth etc please contact us at [sales@denrooms.co.uk](mailto:sales@denrooms.co.uk)



see the full denrooms range at [denrooms.co.uk](http://denrooms.co.uk)

## about the environment

Providing environmentally conscious solutions is in our DNA. So much so that the European Regional Development Fund (ERDF) granted denrooms financial assistance to bring these environmental benefits to market. For full details, please visit: [www.denrooms.co.uk/environmental-policy](http://www.denrooms.co.uk/environmental-policy)

Company Reg No. 8896708 | VAT No. GB 179973729



alphapod MAX



 denrooms dimensions: d 6.15m x w 3.7m





## interior space



the alphapod max builds on the classic 'a-frame' design. The cosy yet clean design boasts an incredible sense of space and volume thanks to the high ceiling. Perfect for a self-contained couples retreat or office. This pod evokes the spirit of adventure and reconnecting with surroundings, whilst retaining a stunningly contemporary feel, both on the inside and out.







### movable & transportable

once manufactured, the alphapod max is delivered complete and ready to use. Its mounted on a detachable wheeled base, and then positioned ready for use with a foundation method specific to the site



### genuinely low maintenance

Our pods are framed in CNC machined structural grade timber and enclosed with a range of attractive decorative low-maintenance panelling, for decades of weather resistance and good looks.



### ultra insulation

denrooms use two insulation systems which combine to significantly exceed current UK building regulations, providing class leading thermal insulation performance.



### excellent detailing

UK Made, architecturally inspired, factory-built 'pods'. we pride ourselves in design, from using sustainably sourced Western Red Cedar cladding offering outstanding durability to including in every pod opening roof windows that flood the space with ambient light.



### built as a house

denrooms use innovative sustainable construction methods, so that our pods are built to be as strong and durable as that of a house builder.



front elevation

side elevation



rear elevation

side elevation

## specification alphapod MAX

- Structural timber (OSB3) super-structure, CNC machined to exacting tolerances.

### exterior finish

- Exterior roof panels made from heavy duty PVC/Plastisol coated pre-galvanised steel sheets, which come with 25 years coating guarantee until first maintenance
- Premium grade Western Red Cedar cladding with powder coated aluminium trims and flashings. Stainless steel fixings for longevity.

### interior finish

- Painted tongue and groove wooden interior throughout main living space. UPVC commercial grade decorative wall treatment to bathroom
- Durable commercial grade vinyl 'click' flooring in classic oak (other colour choices available)

### interior

- Self-contained wash room with large shower enclosure (with tray), toilet, sink and electric only pressurised hot water system (Megaflo 90D direct unvented cylinder, or equivalent, serving kitchenette as well).
- Compact 'Elfin' kitchenette with mini fridge, combo oven/microwave, twin electrical hotplates, and storage or\* bar area with wine fridge (cooking implements and utensils excluded)
- NICEIC Electrical installation– 5 double sockets (with USB), shaver-point in bathroom, LED lighting throughout, including external lights. NICEIC certified electrical installation (excludes connection to your electrical provision), distribution box and min 32amp hook up point

### windows and doors

- Grey high security and low-maintenance 5-lever PVCu doors complete with 10 year guarantee. 2 xRooflights with opening panels and trickle push vents to provide background ventilation.

*Pods all 'plug and play' ready to connect to services, connection excluded (to be performed by customer contractors).*

t: 0330 555 2333  
w: [www.denrooms.co.uk](http://www.denrooms.co.uk)  
e: [sales@denrooms.co.uk](mailto:sales@denrooms.co.uk)

## dimensions

(external) d 6.15m x w 3.7m

(internal) d 5.5m x w 3.2m

## options

- for information on the different options you can make such as external cladding treatments / window positions /porch depth etc please contact us at [sales@denrooms.co.uk](mailto:sales@denrooms.co.uk)



see the full denrooms range at [denrooms.co.uk](http://denrooms.co.uk)

## about the environment

Providing environmentally conscious solutions is in our DNA. So much so that the European Regional Development Fund (ERDF) granted denrooms financial assistance to bring these environmental benefits to market. For full details, please visit: [www.denrooms.co.uk/environmental-policy](http://www.denrooms.co.uk/environmental-policy)

Company Reg No. 8896708 | VAT No. GB 179973729



alphaslice



 denrooms dimensions: d 6.1m x w 3m





Wiring and outlets for wall mounted TV



Microwave and Fridge with small freezer compartment. Integrated storage above optional



full height wardrobe space



Painted tongue and groove wooden interior throughout main living space. (Colour options available)



Self-contained wash room with large shower enclosure (with tray), toilet, sink



double size bed

## interior space



the alphaslice is our smallest unit inspired by classic 'a-frame' design, but with an asymmetric contemporary twist (its side chopped off). This pod evokes the spirit of adventure and reconnecting with surroundings, whilst retaining a stunningly contemporary feel, both on the inside and out. The slice is perfect for couples.







### movable & transportable

once manufactured, the alphaslice XL is delivered complete and ready to use. Its mounted on a detachable wheeled base, and then positioned ready for use with a foundation method specific to the site



### genuinely low maintenance

Our pods are framed in CNC machined structural grade timber and enclosed with a range of attractive decorative low-maintenance panelling, for decades of weather resistance and good looks.



### ultra insulation

denrooms use two insulation systems which combine to significantly exceed current UK building regulations, providing class leading thermal insulation performance.



### excellent detailing

UK Made, architecturally inspired, factory-built 'pods'. we pride ourselves in design, from using sustainably sourced Western Red Cedar cladding offering outstanding durability to including in every pod opening roof windows that flood the space with ambient light.



### built as a house

denrooms use innovative sustainable construction methods, so that our pods are built to be as strong and durable as that of a house builder.



front elevation

side elevation



rear elevation

side elevation

## specification alphaslice

- Structural timber (OSB3) super-structure, CNC machined to exacting tolerances.

### exterior finish

- Exterior roof panels made from heavy duty PVC/Plastisol coated pre-galvanised steel sheets, which come with 25 years coating guarantee until first maintenance
- Premium grade Western Red Cedar cladding with powder coated aluminium trims and flashings. Stainless steel fixings for longevity.

### interior finish

- Painted tongue and groove wooden interior throughout main living space. UPVC commercial grade decorative wall treatment to bathroom
- Durable commercial grade vinyl 'click' flooring in classic oak (other colour choices available)

### interior

- Self-contained wash room with large shower enclosure (with tray), toilet, sink and electric only pressurised hot water system (Megaflo 90D direct unvented cylinder, or equivalent, serving kitchenette as well).
- Compact 'Elfin' kitchenette with mini fridge, combo oven/microwave, twin electrical hotplates, and storage or\* bar area with wine fridge (cooking implements and utensils excluded)
- NICEIC Electrical installation– 6 double sockets (with USB), shaver-point in bathroom, LED lighting throughout, including external lights. NICEIC certified electrical installation (excludes connection to your electrical provision), distribution box and min 32amp hook up point

### windows and doors

- Grey high security and low-maintenance 5-lever PVCu doors complete with 10 year guarantee. 2 xRooflights with opening panels and trickle push vents to provide background ventilation & x3 windows to side wall.

*Pods all 'plug and play' ready to connect to services, connection excluded (to be performed by customer contractors).*

t: 0330 555 2333  
w: [www.denrooms.co.uk](http://www.denrooms.co.uk)  
e: [sales@denrooms.co.uk](mailto:sales@denrooms.co.uk)

## dimensions

(external) d 6.1m x w 3m

(internal) d 5.6m x w 2.5m

## options

- for information on the different options you can make such as external cladding treatments / window positions /porch depth etc please contact us at [sales@denrooms.co.uk](mailto:sales@denrooms.co.uk)



see the full denrooms range at [denrooms.co.uk](http://denrooms.co.uk)

## about the environment

Providing environmentally conscious solutions is in our DNA. So much so that the European Regional Development Fund (ERDF) granted denrooms financial assistance to bring these environmental benefits to market. For full details, please visit: [www.denrooms.co.uk/environmental-policy](http://www.denrooms.co.uk/environmental-policy)

Company Reg No. 8896708 | VAT No. GB 179973729